

Prop and Scenery Lights, LLC

www.propscenerylights.com

Specification Sheet

Passive Infrared Switch Module with timer

P/N: PIR8

Connection and Mounting Diagram



Electrical Characteristics

- 1) Input voltage 12 - 24 volts DC, 6 amp Max.
- 2) Module rating is 72 watts Max. at 12 volts DC 6 Amp, Max. Off delay of switch is adjustable 1 - 10 minutes after motion stops.
- 3) Operation usage temperature range, within -4F to +140F, sense range 16 feet Typ. 26 feet with diminished sensitivity. Sensor field of view 60 degrees.
- 4) Wiring polarity is defined by case marking, use no smaller than 20 Awg wire UL1007 wire or equivalent, for full 6 amp load, fuse with no large rating than 6 amps. **(DO NOT REVERSE POLARITY ON POWER IN OR SWITCH OUT AS DAMAGE MAY OCCUR. CONNECT LOAD TO SWITCH OUT FIRST, ASSURE OUT + AND - CANNOT BE SHORTED OR DAMAGE MAY OCCUR).**

Mechanical Characteristics

- 1) Module body is 3.0" Ref.. in length, 1.36" ref.. width (without connector), 0.80" ref. in height, not including dome lens, (with dome lens projection overall height is 1.40" ref.).
- 2) Power connection is via removable terminal block style connector.
- 3) Mounting is via two slots to accommodate #6 screws
- 4) Module body is of molded ABS plastic, black in color. For installation in moisture protected environment.

Prop and Scenery Lights, LLC

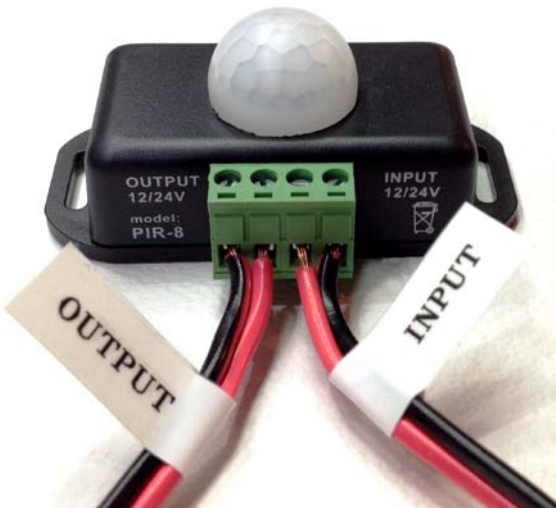
P/N: PIR8

Passive Infrared Switch Module with timer

Rev-B (08/14/17)

Page 1 of 2

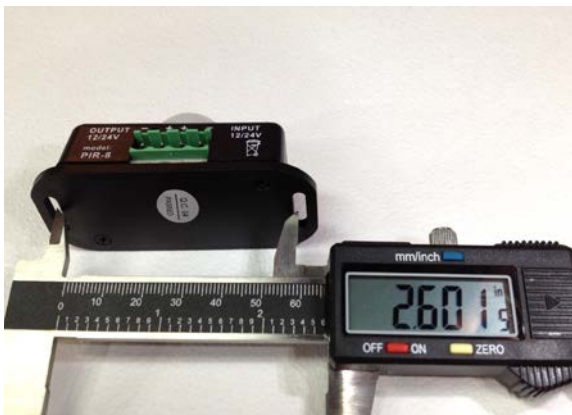
Typical Wiring Connections:



Rear Time adjustment control 1- 10 minutes off delay:



Mounting, screw slots on 2.6" (66mm) ref. centers, slot width 0.13" (3.3mm) ref. length 0.58" (14.7mm) ref.:



**Prop and Scenery Lights, LLC
P/N: PIR8
Passive Infrared Switch Module with timer**

Rev-B (08/14/17)

Page 2 of 2